

University of Maine System Quality of Place Initiative

Proposed by

The Partnership for Civic Advancement

University of Maine at Farmington

November, 2011

Partnership for Civic Advancement

- New initiative of University of Maine at Farmington.
- Purpose: Produce high quality community engagement experiences for UMF students.
- Purpose: In addition to improving educational experience, increase positive impact on western Maine region.



Coordinate/Integrate

- Coordinate activity across community engagement formats.

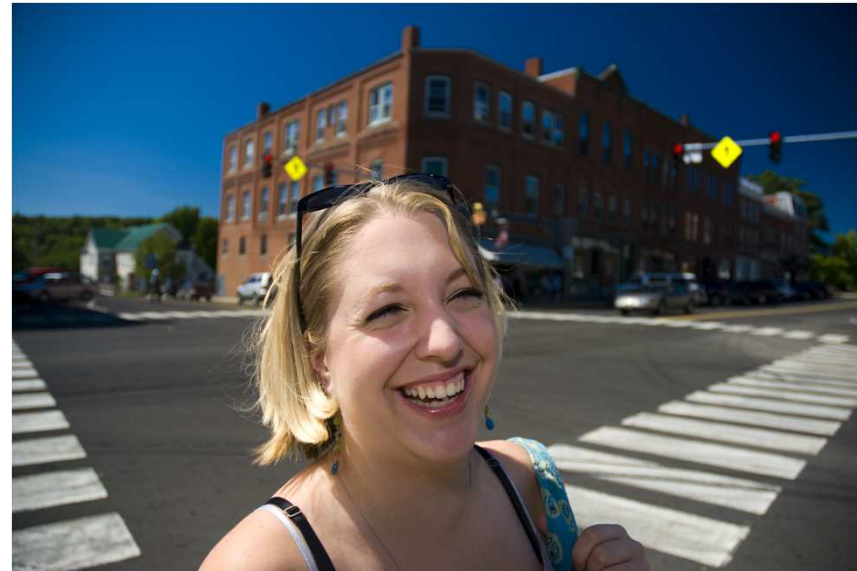
- Internships
- Undergraduate research
- Service learning
- Volunteerism
- Leadership education and training



- Integrate with academic programs and with community development agendas.

Program Elements

- Organizational infrastructure (including information management and communications)
- Student orientation
- Community outreach
- Faculty development
- Evaluation protocols
- Securing resources



Focus

- High priority community needs/opportunities, building local “capital,” and Quality of Place.
 - **Landscape stewardship.** (Includes both natural and built environments.)
 - **Local economies.** (Preliminary focus on recreation tourism and local food systems.)
 - **Vital communities.** (Complementing long standing programs in education and community health, add focus on arts and culture.)



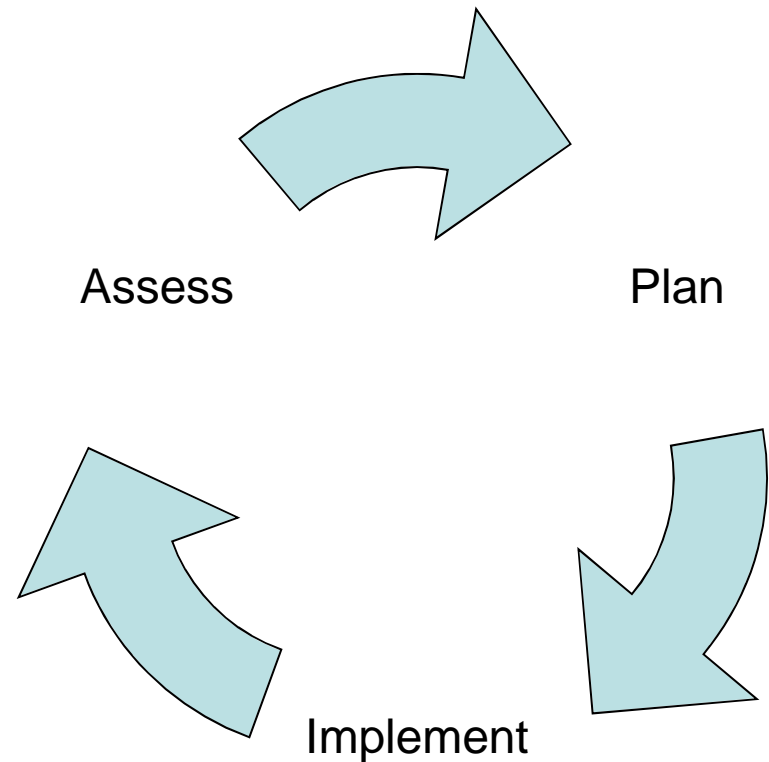
Linkage

- At the request of Chancellor Richard Pattenau, the UMF **Partnership for Civic Advancement** is now linking with other campuses to develop a System-wide Quality of Place initiative.
- In this effort we also hope to partner with the Maine Quality of Place Council.



System-Level Action

- “Map” and assess community engagement activity within identified sectors.
- Identify and share best practices involving university engagement in Quality of Place initiatives.
- Coordinate investment, program development.
- Measure/document both learning and community development outcomes.



Quality of Place Council

- Continue to determine/articulate state-level Quality of Place priorities.
- Explore partnering with Maine's Public Universities to achieving Quality of Place outcomes.

Thank you!